



P R E P E A R
T O L O V E I T

Visit Pearland
— Texas —



Gulf Coast Region of Texas

contents

play	3
events	6
dining	7
stay	11
map	13
shop	15
venues	23
get around – services & transportation	26



Disclaimer: The Visit Pearland Visitors Guide. All Rights Reserved. 5,000 copies printed in 2026 and distributed by Visit Pearland. Visit Pearland makes no warranty, guarantee, or promise, express or implied, as to the information presented herein. Information is presented for informational purposes only.

W E L C O M E

Just 20 minutes south of Houston, Pearland has an identity entirely its own.

Whether you're craving a cold beer from a hometown brewery, looking for a unique cultural arts experience, or simply wanting to shop till you drop, Pearland is a perfect stop on your next tour of Texas.

With a jam-packed events calendar, immersive parks, birdwatching, and plenty of award-winning restaurants there's something new to see, do, and eat in Pearland all year long. Step inside the **Sri Meenakshi Temple**, the only one of its kind outside of India, find live examples of local flora and fauna at the **Delores Fenwick Nature Center**, and explore Pearland's wealth of unique small businesses between the thriving culinary scene, cozy coffee culture, boutique and antique shops, and spacious taprooms.

Pearland is chock-full of attractions, both big and small, to occupy every family member throughout your visit. Head out on the **Pearland Mural Tour** for a journey across Pearland's most artistic landscapes, find and document **PearScape Trail** sculptures, and discover Pearland's rich heritage, dating back to 1894, at historic sites that speak to the legacy of the city.

Pearland is both a destination all its own and the ultimate starting point to exploring the Texas Gulf Coast region.

P R E P A R T O L O V E I T !



play

ARTS, CULTURE, AND HISTORY

Pearland is defined by a rich heritage, with its inception dating back to 1894, and the city showcases a few historic sites that speak to Pearland's legacy.

Historic **Zychlinski Park** is named for Witold von Zychlinski, the Polish nobleman who came to Brazoria County in the late 1880's and fell in love with the flowering pear trees in an area he called Pear Land. It's the oldest park in the city, home to two pear sculptures on the **PearScape Trail** and is just steps away from the famous **Killen's Barbecue**. Ronnie Killen renovated the 1937 schoolhouse cafeteria and opened his first barbecue restaurant in Pearland in 2014.

Just a five-minute drive north to Halik Street off highway 35 you'll find the **Old Settler's Cemetery**, the original community graveyard for the city of Pearland that can be toured during regular Pearland park hours.



The **Sri Meenakshi Temple** welcomes visitors from all over the world and is the only one of its kind outside of India dedicated to Meenakshi, the goddess of marriage. Beyond being a notable religious center, the temple offers a captivating way to discover and experience Hindu culture. Download or bring a physical copy of the self-guided tour brochure and survey the beauty and magnificence of the architecture.



Art takes center stage in Pearland with citywide attractions like the **PearScape Trail** and the **Pearland Mural Tour** showcasing local artists with features across the city. The Pearl Theater turns the spotlight towards the art of theater and storytelling with productions scheduled throughout the year.





MURALS AND PUBLIC ART

Discover the creative side of Pearland like never before with Pearland's digital art passports; the **PearScape Trail** and the **Pearland Mural Tour!**

The **PearScape Trail** is a citywide scavenger hunt featuring large-scale pear sculptures painted by local artists and positioned at community hangouts all over Pearland. Envisioned by the Visit Pearland, the mission of the PearScape Trail is to promote cultural tourism in the area. The project launched the grand **return of the pear** back to Pearland after the city transitioned from its historically agricultural landscape to the shopping, foodie, and events destination that it is today.



Unleashing the power of artistic expression one wall at a time; head out on the Pearland Mural Tour for a journey across Pearland's many murals. From coffee shops and taprooms to the famous Independence Park tunnel mural, and everything in between, check in to local businesses and parks on the tour to earn and redeem points for special prizes from the Visit Pearland office.



ANNUAL EVENTS

Pearland is home to a slate of exciting events celebrating art, culture, food, shopping, and more.

Winter: Hometown Christmas
Pearland Festival of Lights
Lunar New Year

Spring: Puranava
Pearland Grand Arts & Eats
Pearland Boutique Shop and Hop
Tony Booth Day
Concerts in the Park
Spring Fest
Big Art Day

Summer: King Music Fest
Celebration of Freedom
Concerts in the Park

Fall: Latin Festival
Pearland Restaurant Weeks
Pearland Boutique Shop and Hop
Hops and History

Plan your visit with our established events calendar, ensuring an unforgettable and action-packed visit.



dine

SATISFY YOUR APPETITE

Culinary adventures abound in Pearland, where cuisines collide to create a unique landscape of restaurants, brews, and foodie adventures.

Thursday, Friday, and Saturday night eats in Pearland come with a side of live music and good times, and restaurants like **Hometown Sports Bar and Grill**, **Good Vibes Coastal Kitchen**, and **Steamboat Bill's Pearland** host artists from across the state of Texas on their stages regularly.

After an evening out on the town, wake up with locally roasted coffee and a light breakfast at **Pearland Coffee Roasters**, **Waygood Coffee**, or **First Cup Coffee Co.**

Roll out of your cozy hotel bed and right into one of Pearland's brunch-tastic local restaurants. Whether you're in the mood for mimosas and avocado toast, chicken and waffles, or a build-your-own michelada bar, you can truly have it all.



Grab yourself a pint at **Vallensons' Brewing Company**, a creative and award-winning brewery that invites guests to enjoy their revolving menu of beers and cocktails. Marvel at the space-Viking themed murals and spacious backyard, and order something exciting from the food trucks that frequent Vallensons' lot. Revered for their events calendar, be sure to visit for Halloween, Christmas, St. Patrick's Day, and Lunar New Year for an especially fun time.



Saloon Door West is a rotating taproom specializing in their own brews out of their Webster location as well as locally-made beers from across the Houston area. **Rob Ray's Taproom** also serves up Texas-made beers alongside weekly events like trivia night, live music, salsa night, and game night.

Discover all that Pearland has to offer and peruse our master list of restaurants when planning your next gastro vacation.





Pho Prime



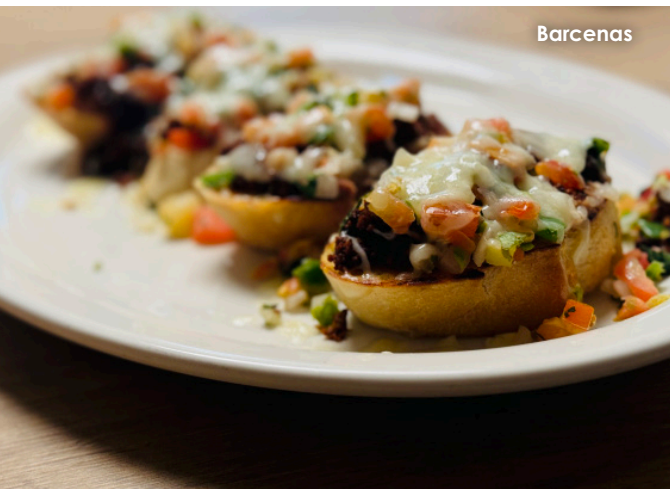
EAT ACROSS THE WORLD IN PEARLAND

Due to Pearland's proximity to both major metropolitan Houston and the industrial Gulf Coast, the Pearland community has grown into a hub of cultural and culinary diversity.

Pearland's dining landscape includes a variety of international and locally owned restaurants offering something appetizing to every palate. From Asian-Cajun fusion and Mediterranean must-haves to menus highlighting traditional Mexican favorites and upscale sushi spots.



Bon voyage!



Barcenas

PEARLAND PIT STOPS

Don't miss out on lunch at one, or more, of Pearland's must-try barbecue destinations. **Killen's Barbecue** put Pearland on the Texas-barbecue map with their giant beef ribs, tender brisket, and famous sides, and **Big Horn BBQ** is located right off of Texas State Highway 288 for easy access to Big Horn favorites for breakfast, lunch, and dinner. **Central Texas BBQ** is a Texas Historical Commission designated Texas Treasure Business that has served up hickory-smoked goodness and indulgent desserts in Pearland over four generations since 1969.



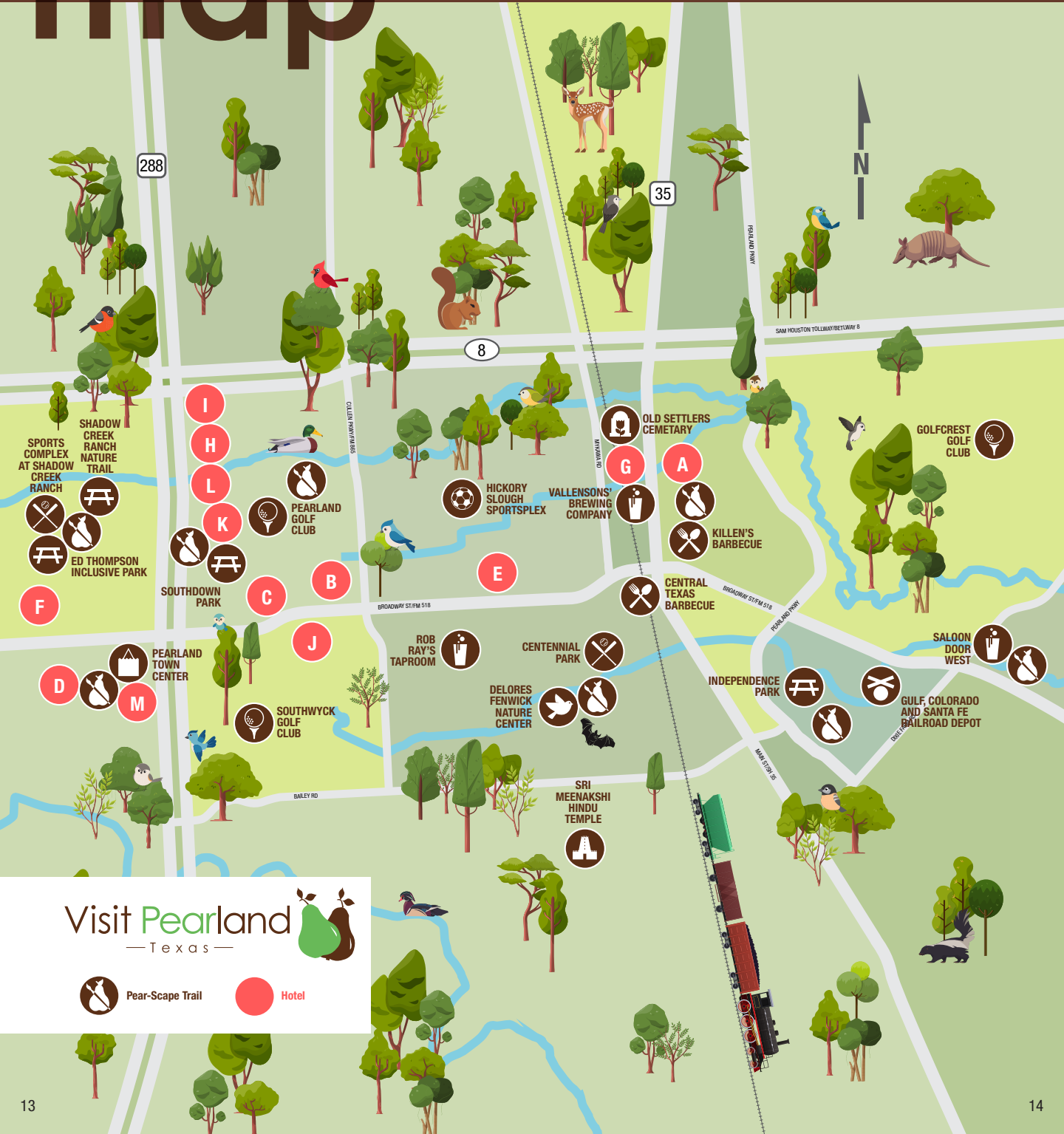
Killen's Barbecue

stay



	Room Count	Number of Meeting Rooms	Complimentary Breakfast	Fitness Center	Complimentary WiFi	Complimentary Self Parking	On-Site Laundry	On-Site Restaurant	Pet Friendly	Swimming Pool
A Best Western 1855 N Main St. 281.997.2000 bestwestern.com	45	1	○	○	○	○	○		○	○
B Candlewood Suites 9015 Broadway St. 281.412.7400 ihg.com/candlewood	76	N/A		○	○	○	○		○	
C Spark by Hilton 2806 Miller Ranch Rd. 713.340.1705 hilton.com	73	1	○	○	○	○	○		○	○
D Courtyard by Marriott 11200 Broadway St. #2000 713.413.0500 marriott.com/houcp	110	1		○	○	○	○	○		○
E Hampton Inn by Hilton 6515 Broadway St. 832.736.9977 houstonpearland.hamptoninn.com	61	1	○	○	○	○	○		○	○
F Hilton Garden Inn 12101 Shadow Creek Pkwy. 713.340.0110 houstonpearland.hgi.com	137	8		○	○	○	○	○	○	○
G Holiday Inn Express & Suites 1702 N. Main St. 281.997.2600 ihg.com/holidayinnexpress	83	1	○	○	○	○	○			○
H Holiday Inn Express & Suites 13931 South Freeway (Hwy 288) 713.434.7373 ihg.com/holidayinnexpress	86	1	○	○	○	○	○			○
I Home2Suites by Hilton 13923 South Freeway (Hwy 288) 346.446.4700 home2suites.com	85	1	○	○	○	○	○		○	○
J La Quinta Inn & Suites 9002 Broadway St. 281.412.5454 laquintapearland.com	56	1	○	○	○	○	○		○	○
K Sleep Inn & Suites 1908 Country Place Pkwy. 832.230.3000 sleepinpearland.com	66	1	○	○	○	○	○		○	○
L SpringHill Suites by Marriott 1820 Country Place Pkwy. 713.436.7377 marriott.com/houpl	91	1	○	○	○	○	○		○	○
M Residence Inn by Marriott 3250 Business Center Dr. 281.506.4400 marriott.com/houar	96	1	○	○	○	○	○	○	○	○

map



288

35

8



SAM HOUSTON TOLLWAY/BETOWAY 8

SPORTS COMPLEX AT SHADOW CREEK RANCH

ED THOMPSON INCLUSIVE PARK

SOUTHDOWN PARK

PEARLAND TOWN CENTER

SOUTHWYCK GOLF CLUB

PEARLAND GOLF CLUB

SHADOW CREEK RANCH NATURE TRAIL

PEARLAND GOLF CLUB

PEARLAND GOLF CLUB

PEARLAND GOLF CLUB

PEARLAND GOLF CLUB

PEARLAND GOLF CLUB

PEARLAND GOLF CLUB

PEARLAND GOLF CLUB

PEARLAND GOLF CLUB

I

H

L

K

C

B

J

D

M

F

A

E

G

A

K

L

M

N

O

P

SERLEJANA RETICO

BROADWAY ST/PM 518

BAILEY RD

DA WYKART

BIGLONWAY STEW 518

PEARLAND PARKWAY

MAIN ST/PM 515

OLD SETTLERS CEMETARY

HICKORY SLOUGH SPORTSPLEX

VALLENSONS' BREWING COMPANY

CENTRAL TEXAS BARBECUE

ROB RAY'S TAPROOM

CENTENNIAL PARK

DELORES FENWICK NATURE CENTER

INDEPENDENCE PARK

SALOON DOOR WEST

GULF, COLORADO AND SANTA FE RAILROAD DEPOT

SRI MEENAKSHI HINDU TEMPLE

Visit Pearland — Texas —



Pear-Scape Trail



Hotel

shop

ALL YOUR HEARTS DESIRES

Pearland is a paradise for shoppers of all persuasions with a broad variety of stores located across the city, and essential Pearland sights sprinkled in between. From essential branded stores to eclectic boutiques and resale shops, there is no shortage of choices for retail therapy in Pearland.

The **Pearland Town Center** is an open-air lifestyle mall featuring over 75 specialty stores and a variety of restaurants to fuel your shopping experience. It's the perfect starting point for your weekend escape with nearby hotels and a busy events pavilion.



Locally owned boutiques line the streets of Pearland including crowd favorites such as **And a Little Hope Boutique**, **Your Boutique Shop**, and **Queen Bling Boutique**.

Find hidden treasures at **Antiques Beads** and **Crafty People**, and **Brows' Aroun' Antiques**, then head over to **Cole's Antique Village and Market** for both excellent shopping and tasty treats.”



On the hunt for a special statement piece? **Brooke's Boutique** is a stylish, upscale consignment store with lightly loved and like new designer handbags, jewelry, and clothing.

Pearland is home to an incredible monthly farmer's market. Find local produce and handcrafted goods at the **Old Pearland Farmers Market** on the third Saturday of every month at **Independence Park**.

The **Pearland Boutique Shop and Hop** is held annually the day before Mother's Day and the last Saturday of October at locally owned boutiques across the city. Gather your shopping buddies and join Pearland boutiques for drinks, snacks, and incredible shopping while exploring the city and completing your **#PearlandBoutiqueShopHop** passport.



Unlock exclusive perks and special visitor discounts from several Pearland stores with the Pearland **Visitor Savings Pass**. Register for free and redeem your savings at checkout.



parks

Enjoy serene trails, family-friendly play areas, a variety of sports fields, and first class indoor recreational facilities. Learn more at VisitPearland.com or call 281-997-5970.

Pearland Parks & Facilities:	Baseball Fields	Basketball Courts	Cricket Fields	Disc Golf	Pickle Ball	Multi-Purpose Fields	Nature Trails & Birding	Pavilions	Rental Space Available	Rugby Fields	Soccer Fields	Softball Fields	Tennis Courts	Volleyball Courts
CENTENNIAL PARK 3219 McLean Road		○		○	○	○	○	○	○		○	○	○	
HICKORY SLOUGH SPORTSPLEX 7600 Hughes Ranch Road						○			○		○			
INDEPENDENCE PARK 3919 Liberty Drive		○					○	○	○				○	
JOHN HARGROVE ENVIRONMENTAL COMPLEX/MARY'S CREEK TRAIL 5750 Magnolia St.							○							
RECREATION CENTER & NATATORIUM 4141 Bailey Road		○			○				○					○
SHADOW CREEK RANCH NATURE TRAIL 1801 Kingsley Drive							○							
SOUTHDOWN PARK AND WEST PEARLAND COMMUNITY CENTER 2150 Country Place Pkwy.						○		○	○					○
THE SPORTSPLEX AT SHADOW CREEK RANCH 13050 Shadow Creek Pkwy.	○		○		○	○	○	○	○	○	○	○		
VETERANS SPORTS COMPLEX 3901 Veterans Drive	○					○			○			○		
Harris County Parks & Facilities:	Baseball Fields	Basketball Courts	Cricket Fields	Disc Golf	Pickle Ball	Multi-Purpose Fields	Nature Trails & Birding	Pavilions	Rental Space Available	Rugby Fields	Soccer Fields	Softball Fields	Tennis Courts	Volleyball Courts
CHRISTIA V. ADAIR PARK 15107 Cullen Blvd.							○	○	○				○	○
EL FRANCO LEE PARK 9400 Hall Road							○	○	○		○			
TOM BASS REGIONAL PARK 15108 Cullen Blvd.				○			○	○	○				○	○



OUTDOOR AND RECREATION

With more than 200 days of sunshine per year, Pearland is an ideal place to immerse yourself in the great outdoors. At the **Delores Fenwick Nature Center** find live examples of local flora and fauna, kid focused events, and inspiring lessons from knowledgeable staff who are passionate about sharing the wonders of nature with the next generation. Enjoy a rejuvenating hike on the **Shadow Creek Ranch Nature Trail** where you'll find paved walkways, interpretive signage, an elevated observation platform, and plenty of wildlife on the 1.5-mile round trip.



Visit Pearland's very first all-inclusive playground, the Ed Thompson Inclusive Park, for an array of accessible structures, including slides, swings, balance beams, and sensory play environments. The 9,200-square-foot playground embraces all abilities and commits to accessible play and learning for children from every walk of life.



Discover if the early bird does indeed catch the worm on your next trip to Pearland. Settled within the Clear Lake Loop of the **Great Texas Coastal Birding Trail**, Pearland is a year-round birding wonderland home to hundreds of species across the city including wading herons, colorful warblers, nesting egrets, Roseate Spoonbills, and more. Grab some breakfast, plenty of water, and your binoculars before spending a morning with the native and migratory birds that settle here in Pearland.



Maternal colonies of Mexican Free-tailed bats form in Pearland every spring as they begin arriving in Texas from their over-wintering sites in Mexico. Enthusiasts flock to Pearland's Edible Fruit Trail for the best vantage point of the Fite Bridge Bat Colony, home to more than 10,000 bats.



Perfect your swing at any of the three golf courses that call Pearland home. **Golfcrest Country Club**, **Pearland Golf Club**, and the **Southwyck Golf Club** are each top-notch facilities that offer differing experiences to explore.



Pearland is a spectacular starting point to your very own adventure throughout the Texas Gulf Coast. Two of the most significant birding destinations in the Lone Star State (Brazoria National Wildlife Refuge and San Bernard National Wildlife Refuge) are within just 60 miles of Pearland's comfortable hotels.

There's a whole world of birding to enjoy along the Gulf Coast, and Pearland sits right in the middle of the best of it. Find an in-depth birding brochure at VisitPearland.com/Birding.



From outdoor adventures to cultural delights, Pearland invites you to experience the best of our community and create lasting memories during your stay.



PREPEAR TO LOVE IT



Delores Fenwick Nature Center

Interactive Exhibits • Programs & Classes
Live Animals • Nature Trail
Tuesday – Saturday
9 a.m. to 5 p.m. • FREE admission

Located at the John Hargrove Environmental Complex, the Delores Fenwick Nature Center overlooks 1.7 miles of natural trails with interpretive signage. Enjoy waterfowl and other birds on Texas' first municipal floating wetlands in this prime location on the Great Texas Coastal Birding Trail.

Exhibits include:

- Live animals
- Wetland diorama
- Craft station
- Wildlife ID station
- What's Your Wingspan wall
- Waterbird outlook station
- Interactive digital ecosystem
- Touch table
- Digital games
- Build-A-Bird
- Wetland Education Pond

LIVE Animals include:

Texas Native Snakes, Frogs, Turtles, Alligators, and Fish.

Additional resources:

- To download a copy of the Pearland Birding Brochure, head to visitpearland.com/birding.
- For classes, workshops and more, visit pearlandparks.com.



5750 Magnolia Parkway
Pearland, TX 77584
For bookings and general
info, call 281.652.1960

venues

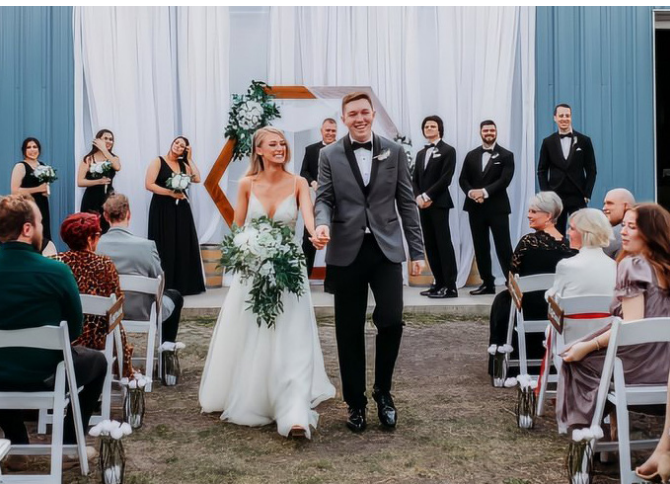
PRIME EVENT LOCATIONS

Delve into Pearland's variety of event venues, from the elegant ambiance of **Maison de Veaux** to the modern charm and convenience of the **Hilton Garden Inn's** conference and convention space.

Ideal for weddings, reunions, special events, and small meetings, Pearland venues and hotels are in close proximity to both local and Houston amenities including William P. Hobby Airport, international restaurants, both indoor and outdoor activities, sports facilities, and more.



Many families host their weddings, reunions, and other extensive family gatherings at Pearland's larger venues like **La Maison Blanc**, **County Line Event Center**, **Golfcrest Country Club**, **Maison De Veaux**, **Vallensons' Brewing Company**, and **Pearland's Knights of Columbus Hall**.



More intimate get-togethers with family, friends, or colleagues fit perfectly within an array of local business spaces including **Saloon Door West**, **Big Horn BBQ**, **Rob Ray's Taproom**, and **Four Friends Tea Room**.

In the off season and in between tournaments, **Texas United Volleyball Club** is available for small conventions and team-building activities, while the **Pearland Town Center** and the **West Pearland Community Center at Southdown Park** provide alternative venues for events and experiences throughout the year.



Let the **Visit Pearland** lend a hand when planning reunions, weddings, meetings, sports tournaments, and social events with our extensive list of complimentary services including hotel room blocks, referral services, planning toolkits, welcome items, guides, coupons, and more. Contact the team at info@visitpearland.com or 281-997-5970 for more details.



FILM IN PEARLAND

As a Texas Film Commission designated **Film Friendly** city, Pearland is ready to help match our local businesses with your production-related needs.

Located just 20 minutes south of Houston's William P. Hobby Airport and 50 minutes from the Gulf Coast, Pearland is an ideal hub-and-spoke **basecamp for film production** with major brand hotel amenities galore like complimentary Wi-Fi, fitness rooms, pools, breakfast, and more.



Between Pearland's range of restaurants, cozy coffee culture, boutique and antique shops, and spacious taprooms there's **a place for your next shoot** at one of Pearland's unique local businesses.



Need something a little more universal? Pearland has plentiful parks, office space, and a **specialized podcast studio** dedicated to both audio and video production needs.

The Visit Pearland offers assistance with special hotel rates for cast and crew by request. Find a directory of Pearland properties and businesses for your next video project at VisitPearland.com/Film.



get around

VISITOR CENTER & TRANSPORTATION

Traveling to Pearland is easy with both **Bush Intercontinental Airport** and **William P. Hobby Airport** servicing the Houston area, major Texas highways feeding directly into the city, and **Galveston's bustling cruise port** just an hour away from Pearland's name brand hotels and lineup of activities.

Easy access means less time in the car and more time exploring everything Pearland has to offer.





Visit Pearland

11200 Broadway St., Suite 1390

Pearland, TX 77584